

1 Thorndale Drive, San Rafael

Class A Medical Space Available



Trevor Buck
Executive Managing Director
trevor.buck@cushwake.com
+1 415 451 2436
LIC #01255462

Whitney Strotz
Executive Managing Director
whitney.strotz@cushwake.com
+1 415 451 2406
LIC #01351397

Brian Foster
Executive Director
brian.foster@cushwake.com
+1 415 451 2437
LIC #01393059



**CUSHMAN &
WAKEFIELD**

BUILDING HIGHLIGHTS



BEST VIEWS IN
MARIN COUNTY



RENOVATED
COMMON AREAS



NEW HVAC
SYSTEM



EXTERIOR
GATHERING AREAS



COVERED AND
SECURE PARKING



BUILDING
SHOWERS



OPEN
FLOORPLAN AND
HIGH CEILINGS



LOADING CAPACITY
AVAILABLE



PRIVATE
TERRACE



RETRACTABLE
ROOF



COMMON AREA
ATRIUM WITH WIFI



1500 SF OF
SECURED STORAGE

**± 9,684 RSF
AVAILABLE**

**SUITE 100:
± 1,914 SF**

**SUITE 205:
± 3,743 SF**

**SUITE 310:
± 4,027 SF**

NEARBY AMENITIES



Rendering of new external elevator

TRANSPORTATION

- Close to SMART Train stop at Civic Center – Roughly 1.1 miles by walking.
- Less than 1 mile to 2 Marin Transit Bus Stops
- E Bikes Tenant Allowance Available
- Abundant Parking Including valet opportunity

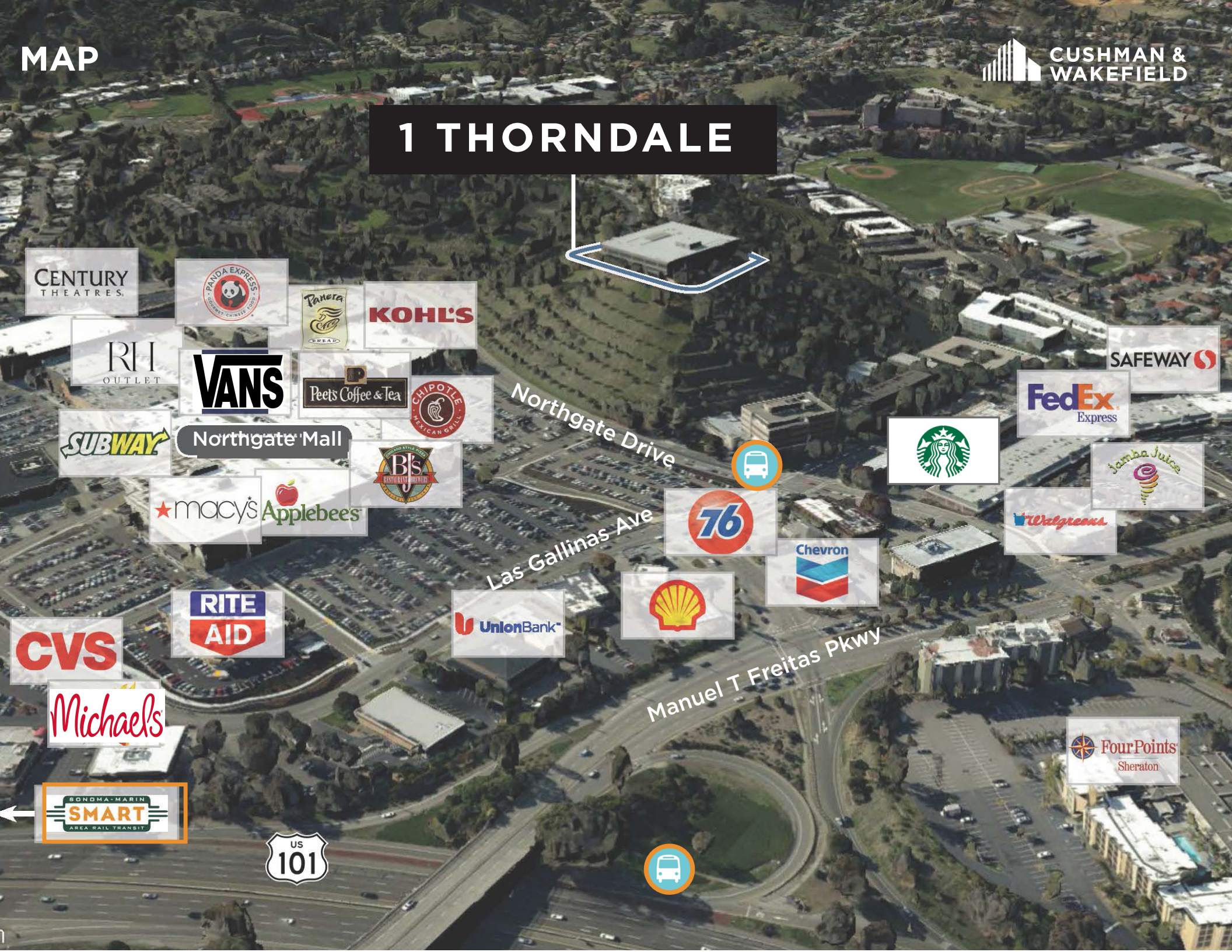
NORTHGATE MALL

- Home Goods
- Panera
- Chipotle
- Peet's Coffee
- Restoration hardware
- Rite Aid
- Century Theatres
- Black Bear Diner
- Wetzel's Pretzels
- Macy's
- BJ's Restaurant
- Lens Crafters
- Vans
- Claire's
- Bank of Marin
- Panda Express
- Kohl's
- Mi Pueblo

HEALTH + FITNESS

- Marin YMCA
- Osher Marin JCC
- China Camp State Park
- Flen Fire Road Trailhead
- Deer Park Trailhead
- Cascade Falls

1 THORNDALE



CENTURY
THEATRES.



KOHL'S

RH
OUTLET

VANS

Peet's Coffee & Tea



Northgate Drive

SUBWAY

Northgate Mall

★ macy's Applebee's



FedEx
Express



Las Gallinas Ave

RITE
AID

Union Bank



Manuel T Freitas Pkwy

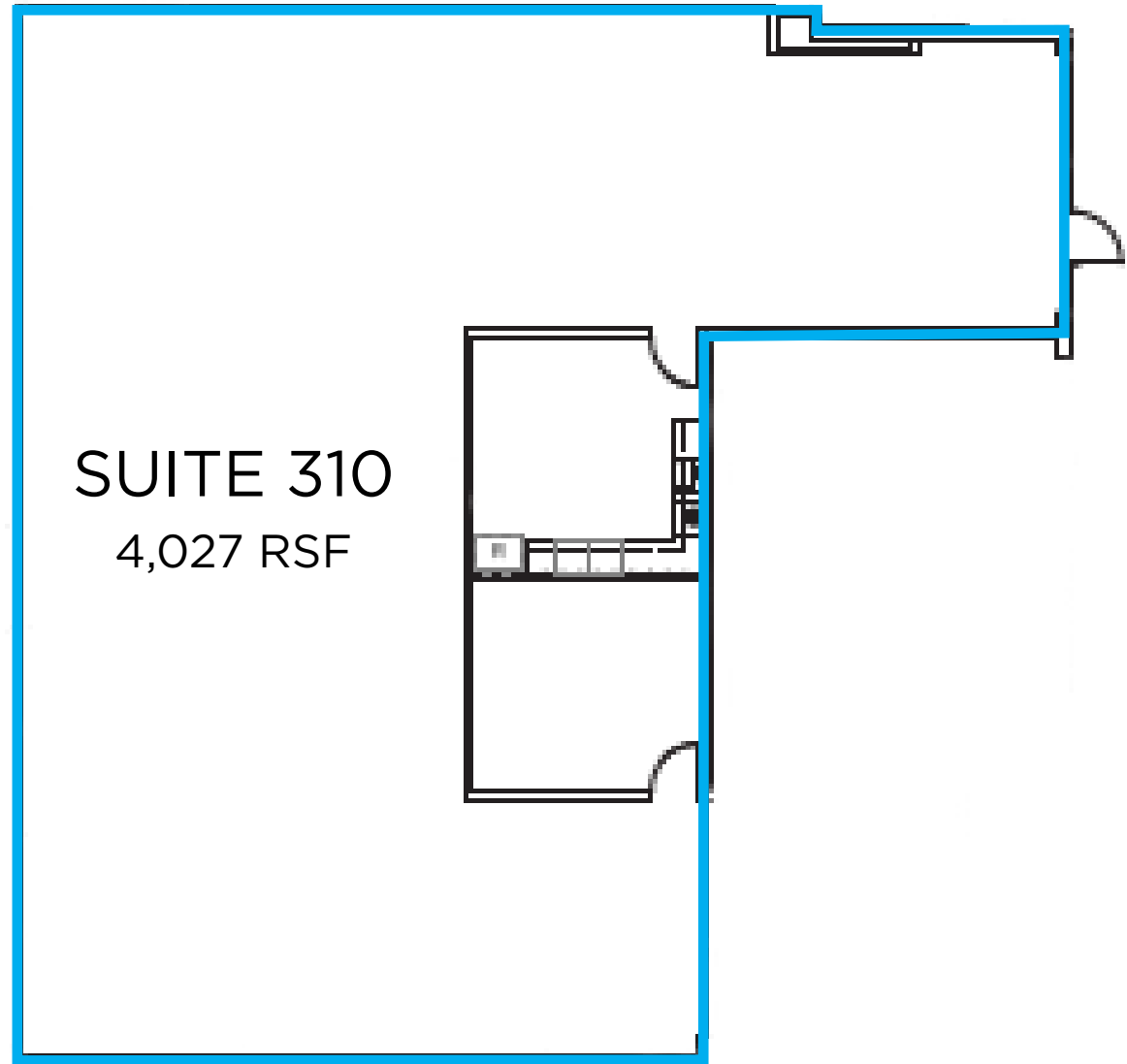
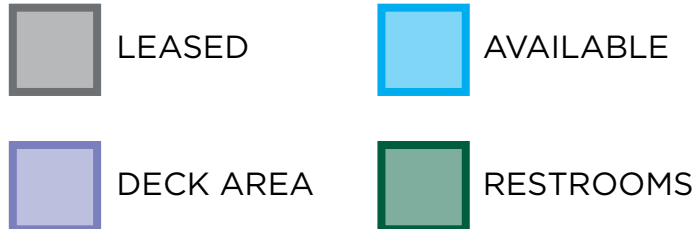
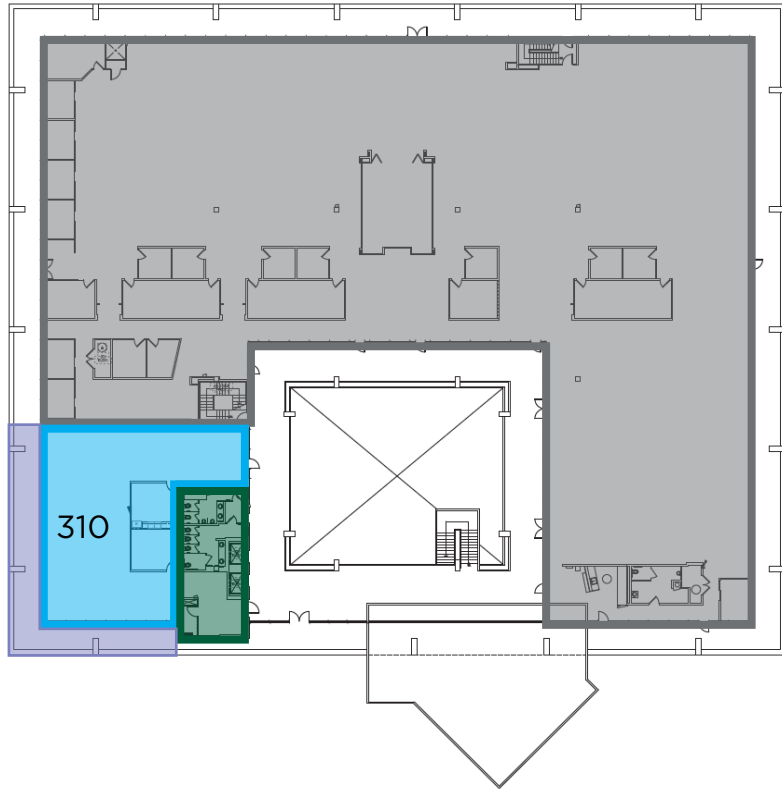
CVS

Michaels



Four Points
Sheraton

UPPER LEVEL FLOOR PLAN



SUITE 310
4,027 RSF

Trevor Buck
Executive Managing Director
trevor.buck@cushwake.com
+1 415 451 2436
LIC #01255462

Whitney Strotz
Executive Managing Director
whitney.strotz@cushwake.com
+1 415 451 2406
LIC #01351397

Brian Foster
Executive Director
brian.foster@cushwake.com
+1 415 451 2437
LIC #01393059





SUITE 310: 4,027 RSF

Trevor Buck
Executive Managing Director
trevor.buck@cushwake.com
+1 415 451 2436
LIC #01255462

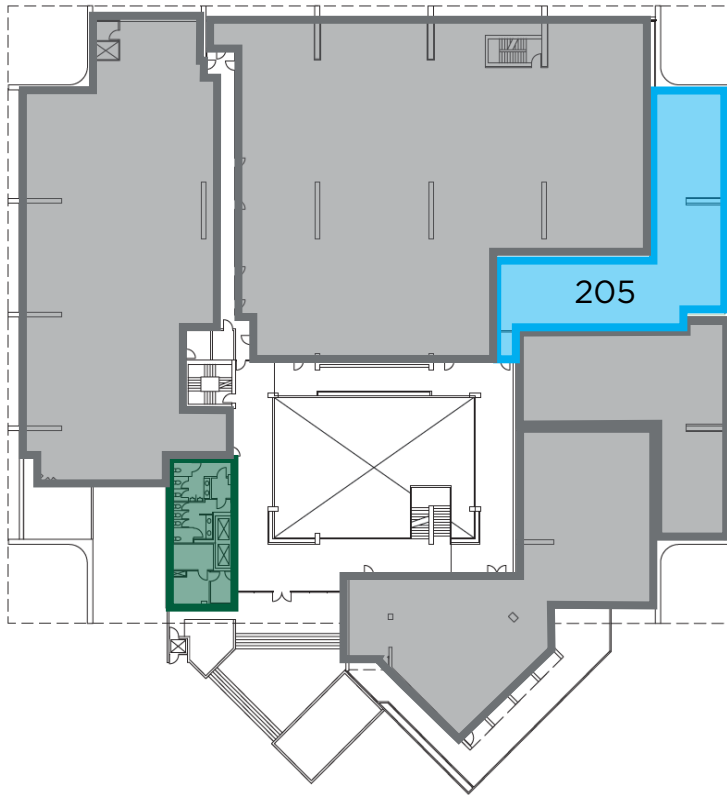
Whitney Strotz
Executive Managing Director
whitney.strotz@cushwake.com
+1 415 451 2406
LIC #01351397

Brian Foster
Executive Director
brian.foster@cushwake.com
+1 415 451 2437
LIC #01393059



**CUSHMAN &
WAKEFIELD**

MID LEVEL FLOOR PLAN



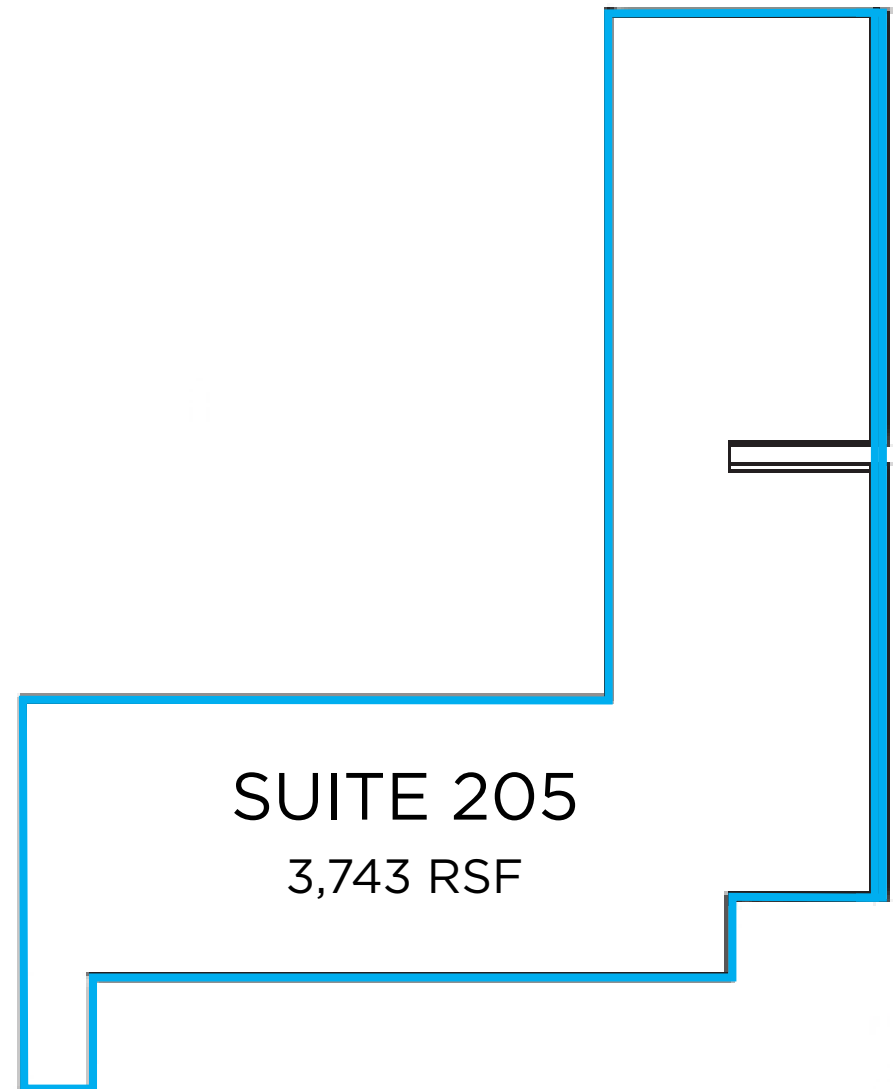
LEASED



AVAILABLE



RESTROOMS



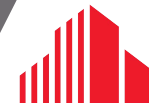
SUITE 205

3,743 RSF

Trevor Buck
Executive Managing Director
trevor.buck@cushwake.com
+1 415 451 2436
LIC #01255462

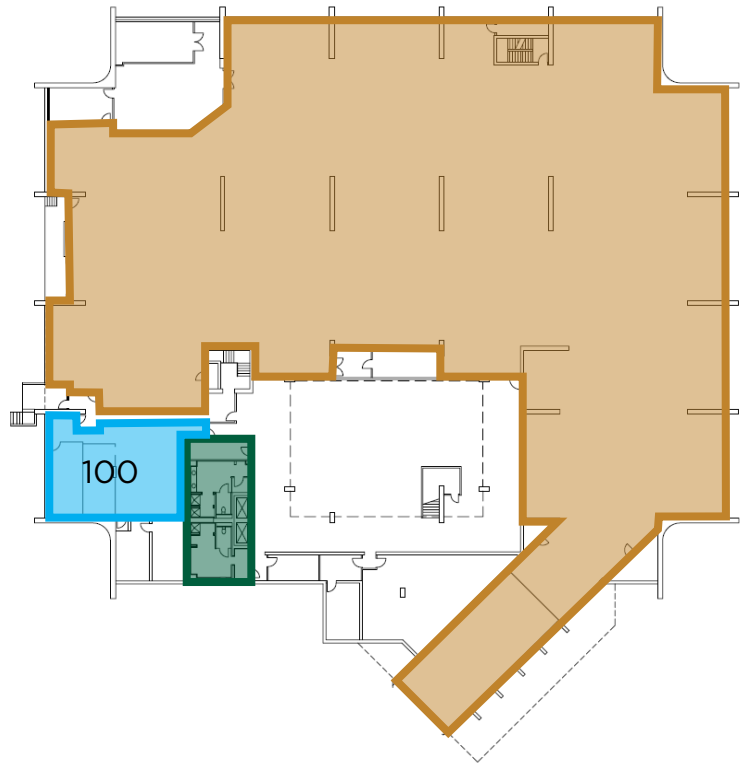
Whitney Strotz
Executive Managing Director
whitney.strotz@cushwake.com
+1 415 451 2406
LIC #01351397

Brian Foster
Executive Director
brian.foster@cushwake.com
+1 415 451 2437
LIC #01393059



**CUSHMAN &
WAKEFIELD**

LOWER LEVEL FLOOR PLAN



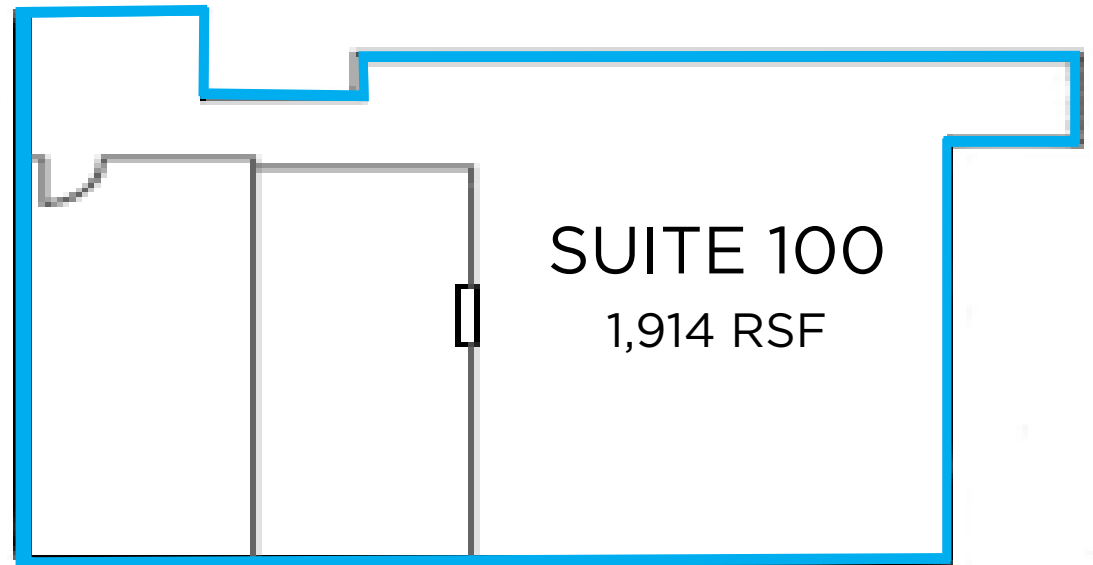
PARKING



AVAILABLE



RESTROOMS



SUITE 100

1,914 RSF

Trevor Buck
Executive Managing Director
trevor.buck@cushwake.com
+1 415 451 2436
LIC #01255462

Whitney Strotz
Executive Managing Director
whitney.strotz@cushwake.com
+1 415 451 2406
LIC #01351397

Brian Foster
Executive Director
brian.foster@cushwake.com
+1 415 451 2437
LIC #01393059



**CUSHMAN &
WAKEFIELD**

1 Thorndale Drive, San Rafael

Class A Medical Space Available



Trevor Buck
Executive Managing Director
trevor.buck@cushwake.com
+1 415 451 2436
LIC #01255462

Whitney Strotz
Executive Managing Director
whitney.strotz@cushwake.com
+1 415 451 2406
LIC #01351397

Brian Foster
Executive Director
brian.foster@cushwake.com
+1 415 451 2437
LIC #01393059

